



Baker Atlas



FILE NO:	COMPANY	NALCOR ENERGY
API NO:	WELL	NALCOR ET AL FINNEGAN #1
	FIELD	FINNEGAN
	PROVINCE	NEWFOUNDLAND AND LABRADOR
Ver. 3.87	LOCATION:	OTHER SERVICES
LICENSE: 2010-128-04	LAT 49.92 N LONG 63.33 W	JC-CR
PERMANENT DATUM	G.L. ELEVATION 118.75 M	ELEVATIONS:
LOG MEASURED FROM	K.B. 6.25 M ABOVE P.D.	KB 125.00 M
DRILL MEAS. FROM	KELLY BUSHING	DF
		GL 118.75 M

DATE	27-NOV-2010
RUN	3
TRIP	2
SERVICE ORDER	CA207999
DEPTH DRILLER	3130.0 M
DEPTH LOGGER	NA
BOTTOM LOGGED INTERVAL	2220.0 M
TOP LOGGED INTERVAL	0.0 M
TIME STARTED	12:45
TIME FINISHED	17:35
OPERATOR RIG TIME	4.8 HOURS
TYPE OF FLUID IN HOLE	NA
FLUID DENSITY	NA
FLUID SALINITY	NA
FLUID LEVEL	NA
LOGGED CEMENT TOP	NA
WELLHEAD PRESSURE	NA
MAXIMUM HOLE DEVIATION	0.0 DEG
NOMINAL LOGGING SPEED	NA
MAX. RECORDED TEMP.	NA
REFERENCE LOG	SBT/CCL/CR
REFERENCE LOG DATE	27-NOV-2010
EQUIP. NO.	HL4291
LOCATION	OH NISKU
RECORDED BY	J. HOUSE /P. KIELLY
WITNESSED BY	B. WILLIAMS

IN MAKING INTERPRETATIONS OF LOGS OUR EMPLOYEES WILL GIVE CUSTOMER THE BENEFIT OF THEIR BEST JUDGEMENT. BUT SINCE ALL INTERPRETATIONS ARE OPINIONS BASED ON INFERENCES FROM ELECTRICAL OR OTHER MEASUREMENTS, WE CANNOT, AND WE DO NOT GUARANTEE THE ACCURACY OR CORRECTNESS OF ANY INTERPRETATION. WE SHALL NOT BE LIABLE OR RESPONSIBLE FOR ANY LOSS, COST, DAMAGES, OR EXPENSES WHATSOEVER INCURRED OR SUSTAINED BY THE CUSTOMER RESULTING FROM ANY INTERPRETATION MADE BY ANY OF OUR EMPLOYEES.

BOREHOLE RECORD		
BIT SIZE	FROM	TO
444.5 MM	0.0 M	570.0 M
311.0 MM	570.0 M	2285.0 M
216.0 MM	2285.0 M	3130.0 M

CASING RECORD				
SIZE	WEIGHT	GRADE	FROM	TO
339.7 MM	81.1 KG/M	K-55	0.0 M	570.0 M
244.5 MM	64.7 KG/M	NA	570.0 M	2276.0 M

REMARKS	
RUN 3 TRIP 2 :	DEPTH CORRELATED TO BOND LOG RECORDED BY BAKER ATLAS ON 27-NOV-10.
	JUNK CATCHER / GAUGE RING RUN TO 2220.0 M KB
	EZ DRILL BRIDGE PLUG SET AT 2200.0 M KB
	RIG: STONEHAM 11
	CREW: P. KIELLY, S.CREWE, J.HOUSE, L.BAZIAN, J. CHOCOLACEK

EQUIPMENT DATA
----------------

RUN	TRIP	TOOL	SERIES NO.	SERIAL NO.	POSITION

## SETTING PASS

ECLIPS 6.1i Aug 06, 2010  
Patches: 1

Thu Dec 2 14:10:14 2010

Perplt /main/62

Cplot

Pdf\_Cpp /main/16

Fileview 5.50

### PARAMETER AND FILTER SUMMARY REPORT

FILE: /data/pass/nalcor\_finn\_run2/m112c03.prm  
LOGGING MODE: DEPTH DIRECTION: UP  
TOP DEPTH: 2171.624 m BOTTOM DEPTH: 2210.408 m

### SYMMETRIC FILTER

MEASUREMENT TYPE	PARAMETER	VALUE	UNITS	INTERVAL (m)	
SPEED	FILTER ( )	medium (1)		TOP	BOTTOM
TENSION	FILTER ( )	medium (1)		''	''

### PARAMETER AND FILTER SUMMARY REPORT

FILE: /data/pass/nalcor\_finn\_run2/m112c02.prm  
LOGGING MODE: DEPTH DIRECTION: UP  
TOP DEPTH: 2169.338 m BOTTOM DEPTH: 2210.096 m

### SYMMETRIC FILTER

MEASUREMENT TYPE	PARAMETER	VALUE	UNITS	INTERVAL (m)	
SPEED	FILTER ( )	medium (1)		TOP	BOTTOM
TENSION	FILTER ( )	medium (1)		''	''

### CURVE DESCRIPTION REPORT

CURVE NAME	CREATION DATE	CURVE DESCRIPTION
F1:ACCL	Dec 2 12:48:54 2010	ANALOG (CONTINUOUS) CCL FOR SHOOTING
F1:SPD	Dec 2 12:48:54 2010	SPEED
F1:TEN	Dec 2 12:48:54 2010	DIFFERENTIAL TENSION
F1:TTEN	Dec 2 12:48:54 2010	TOTAL TENSION

### CURVE MEASURE POINT OFFSET

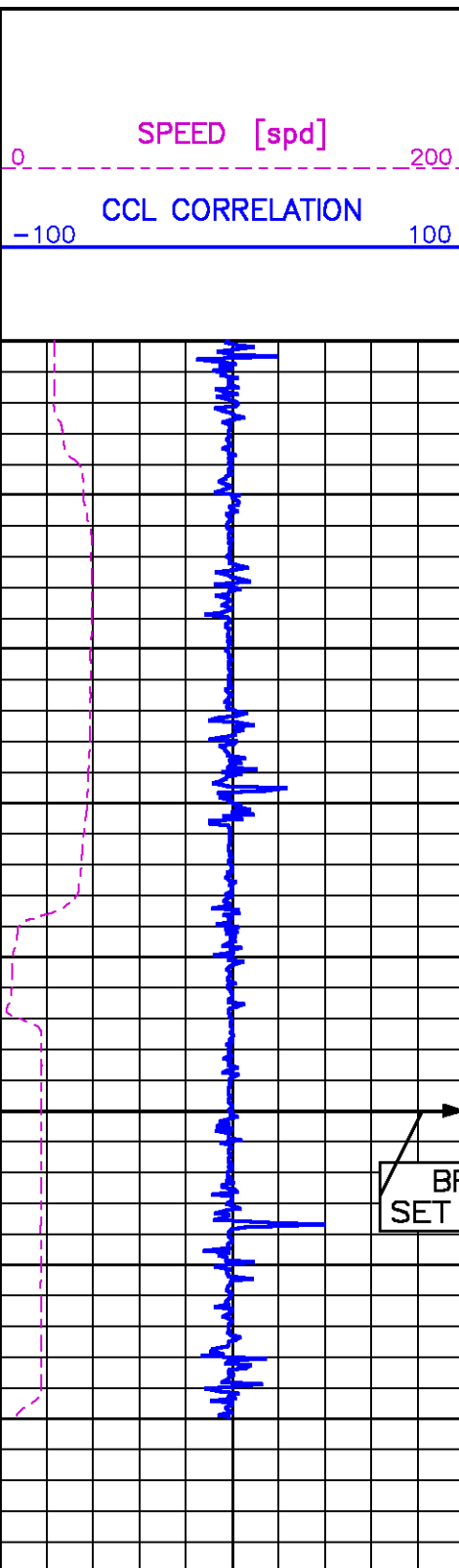
CURVE	OFFSET (m)	CURVE	OFFSET (m)	CURVE	OFFSET (m)	CURVE	OFFSET (m)
ACCL	0.00	SPD	0.00	TEN	-0.30	TTEN	-0.30

Presentation : cpu1:/data/pass/nalcor\_finn\_run2/BP\_ccl.pdf [1:240 Scale]  
Plot Interval : 2175 - 2215 Meters

Data File 1 : F1 : cpu1:/data/pass/nalcor\_finn\_run2/m112c03.xtf  
Created On : Dec 2 12:48:54 2010  
Company : NALCOR ENERGY  
Well : NALCOR ET AL FINNEGAN 1  
Field : FINNEGAN  
File Interval : 2171.55 - 2210.64 Meters  
Oct : m112c

Data File 2 : F2 : cpu1:/data/pass/nalcor\_finn\_run2/m112c02.aff  
Created On : Dec 2 12:38:00 2010  
Company : NALCOR ENERGY  
Well : NALCOR ET AL FINNEGAN 1

Field : FINNEGAN  
File Interval : 2169.26 - 2210.33 Meters  
Oct : m112c

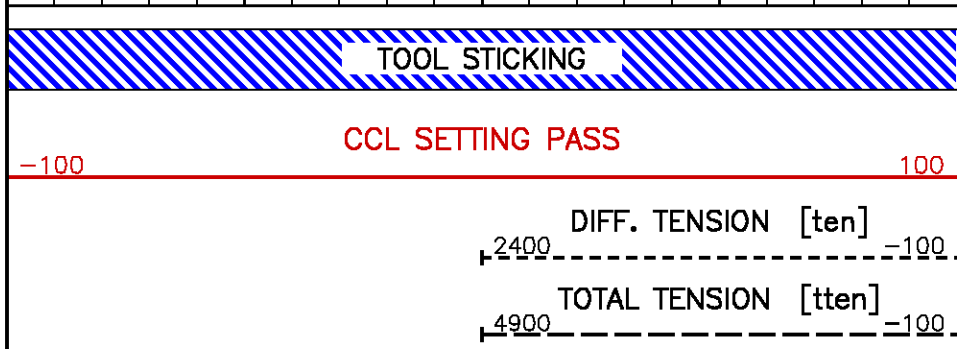
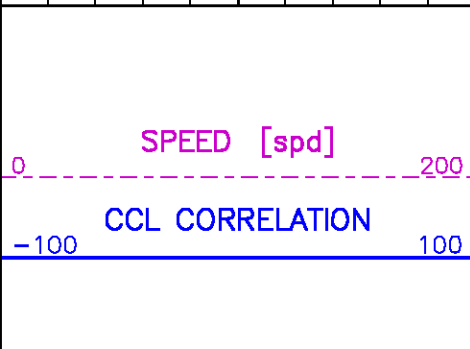
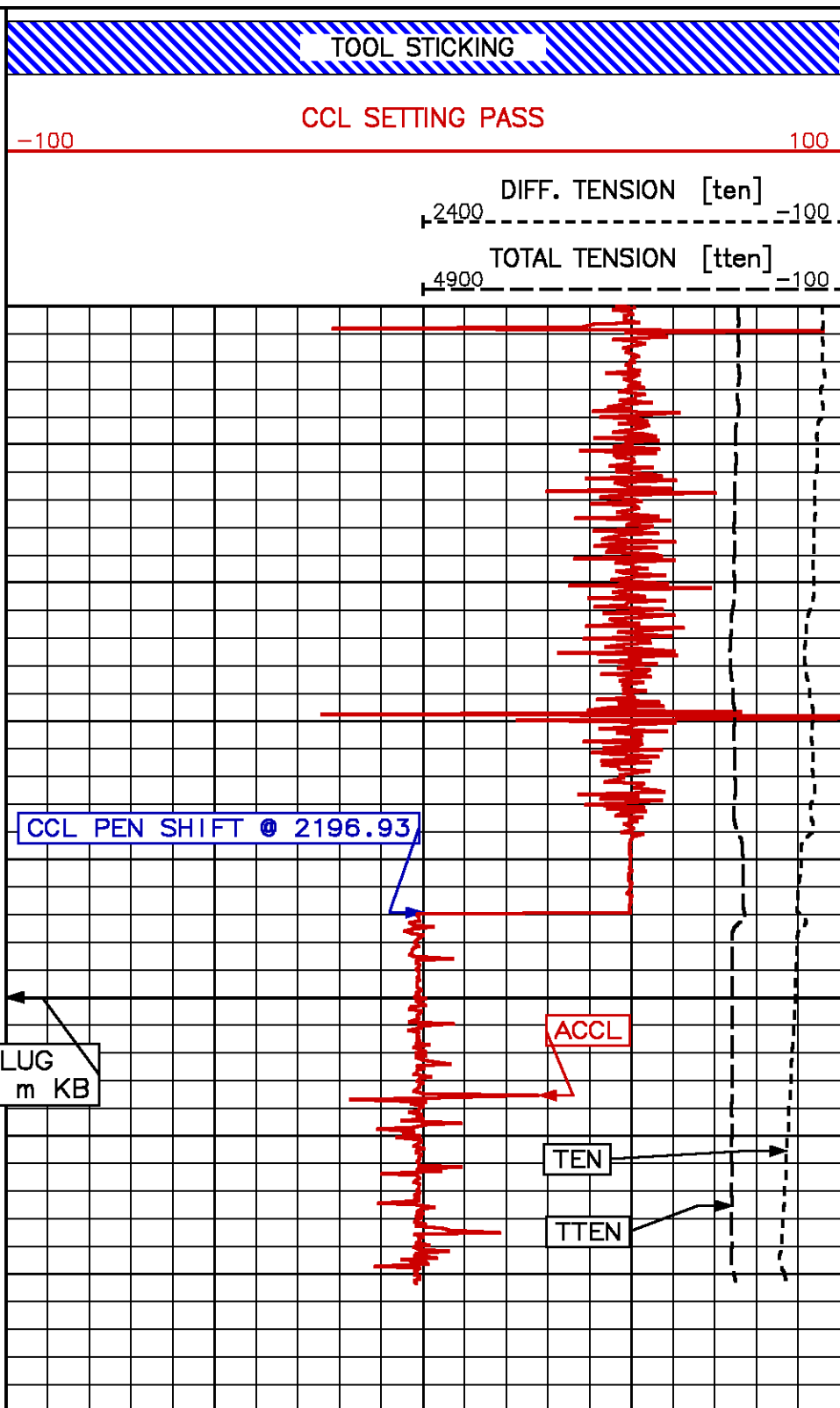


METERS

2175

2200

METERS



# CORRELATION PASS

ECLIPS 6.1i Aug 06, 2010  
Patches: 1

Thu Dec 2 14:08:52 2010

Pcrplt /main/62

Cplot

Pdf\_Cpp /main/16

Fileview 5.50

## PARAMETER AND FILTER SUMMARY REPORT

FILE: /data/pass/nalcor\_finn\_run2/m112c02.prm  
LOGGING MODE: DEPTH DIRECTION: UP  
TOP DEPTH: 2169.338 m BOTTOM DEPTH: 2210.096 m

## SYMMETRIC FILTER

MEASUREMENT TYPE	PARAMETER	VALUE	UNITS	INTERVAL (m)
SPEED	FILTER ( )	medium (1)		TOP
TENSION	FILTER ( )	medium (1)		BOTTOM

## CURVE DESCRIPTION REPORT

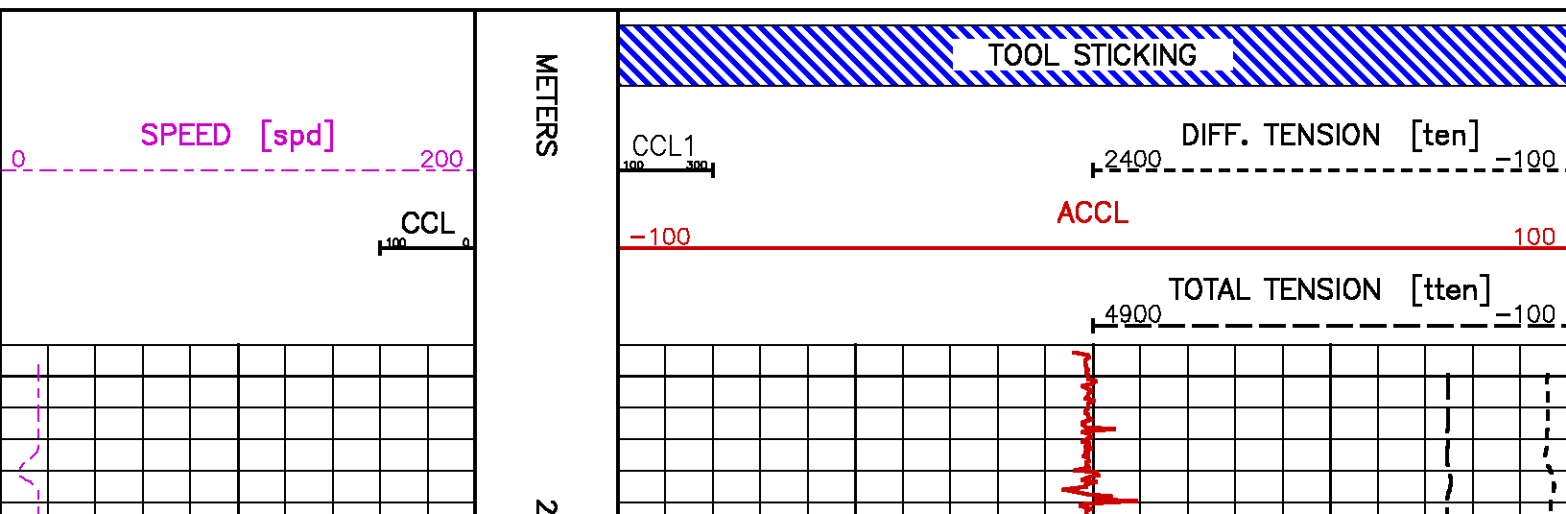
CURVE NAME	CREATION DATE	CURVE DESCRIPTION
F1:ACCL	Dec 2 12:38:00 2010	ANALOG (CONTINUOUS) CCL FOR SHOOTING
F1:CCL	Dec 2 12:38:00 2010	CASING COLLAR LOCATOR
F1:SPD	Dec 2 12:38:00 2010	SPEED
F1:TEN	Dec 2 12:38:00 2010	DIFFERENTIAL TENSION
F1:TEN	Dec 2 12:38:00 2010	TOTAL TENSION

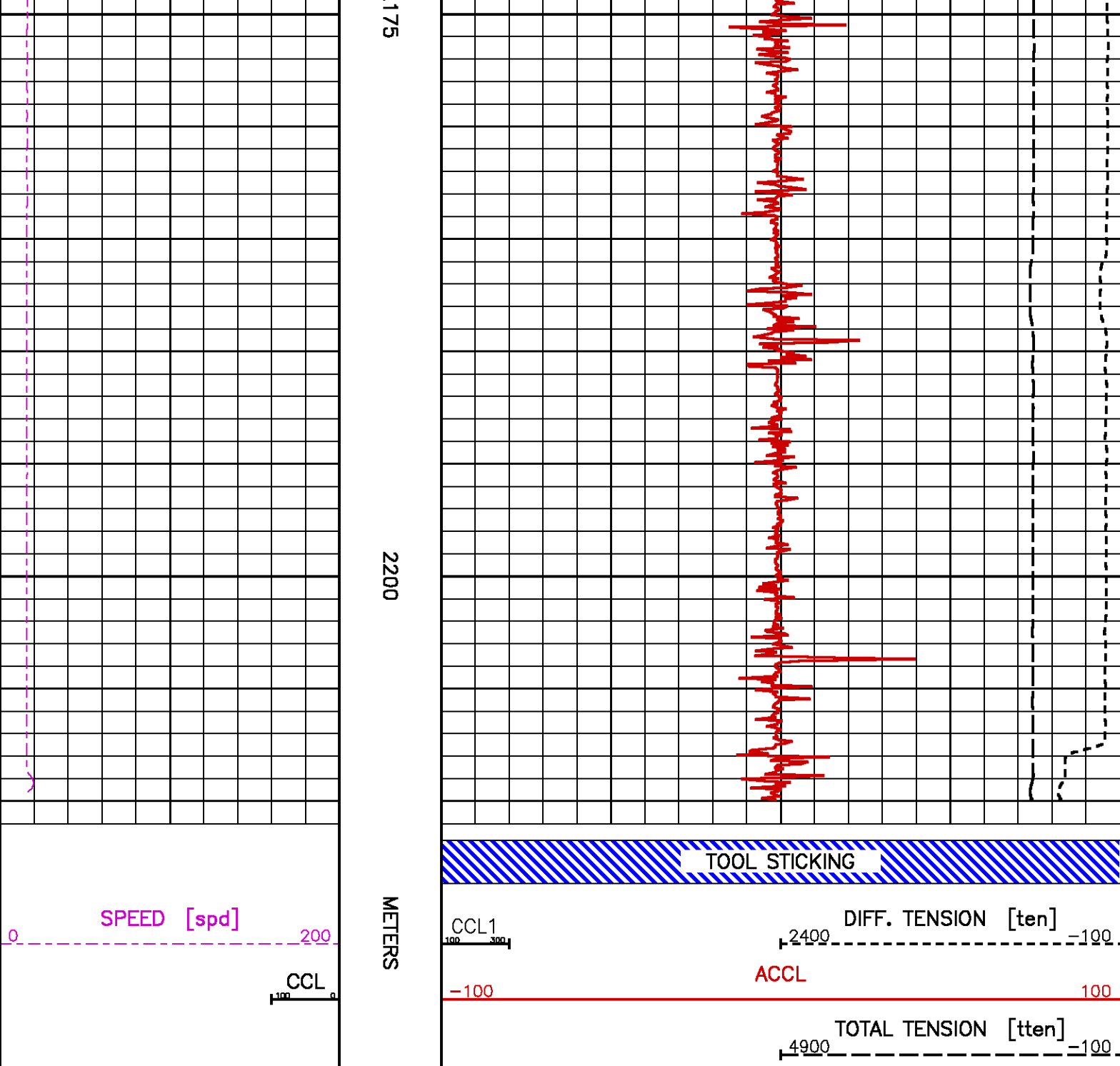
## CURVE MEASURE POINT OFFSET



CURVE	OFFSET (m)	CURVE	OFFSET (m)	CURVE	OFFSET (m)	CURVE	OFFSET (m)
ACCL	0.00	SPD	0.00	TEN	-0.30		
CCL	0.00	TEN	-0.30				

Presentation : cpu1:/data/pass/nalcor\_finn\_run2/corr.pdf [1:240 Scale]  
Plot Interval : 2169.26 - 2210.03 Meters

Data File 1 : F1 : cpu1:/data/pass/nalcor\_finn\_run2/m112c02.aff  
Created On : Dec 2 12:38:00 2010  
Company : NALCOR ENERGY  
Well : NALCOR ET AL FINNEGAN 1  
Field : FINNEGAN  
File Interval : 2169.26 - 2210.33 Meters  
Oct : m112c





 <b>Baker Atlas</b> 	COMPANY WELL FIELD PROVINCE	NALCOR ENERGY NALCOR ET AL FINNEGAN #1 FINNEGAN NEWFOUNDLAND AND LABRADOR	FILE NO:  API NO:  
	LOCATION:  LAT 49.92 N LONG 63.33 W	ELEVATIONS: KB 125.00 M DF GL 118.75 M	LICENSE: 2010-128-04
		DATE	27-NOV-2010